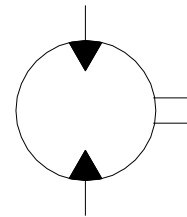


## □ YMT SERIES HYDRAULIC MOTOR

YMT series motors adapt the advanced Gerolor gear set design with disc distribution flow and high pressure. The unit can be supplied the individual variant in operating multifunction in accordance with requirement of applications.

Characteristic Features:

- Advanced manufacturing devices for the Gerolor gear set, which use low pressure of start-up, provide smooth and reliable operation and high efficiency.
- The output shaft adapts in tapered roller bearings that permit high axial and radial forces. The case can offers capacities of high pressure and high torque in the wide of applications.
- Advanced design in disc distribution flow, which can automatically compensate in operating with high volume efficiency and long life, provide smooth and reliable operation.



**Graphical Symbol**

## □ SPECIFICATIONS:

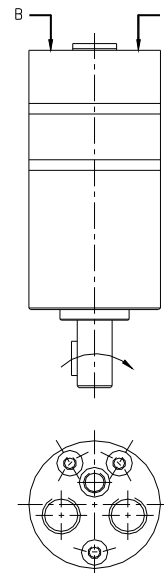
Type		YMT 160	YMT 200	YMT 230	YMT 250	YMT 315	YMT 400	YMT 500	YMT 630	YMT 800
<b>Geometric Displacement (cm<sup>3</sup>/rev.)</b>		161.1	201.4	232.5	251.8	326.3	410.9	523.6	629.1	801.8
<b>Max. Speed (rpm)</b>	Cont.	625	625	536	500	380	305	240	196	154
	Int.	780	750	643	600	460	365	285	233	185
<b>Max. Torque (Nm)</b>	Cont.	470	590	670	730	950	1080	1220	1318	1464
	Int.	560	710	821	880	1140	1260	1370	1498	1520
	Peak	669	838	958	1036	1346.3	1450.3	1643.8	1618.8	1665
<b>Max. Output (kW)</b>	Cont.	27.7	34.9	34.7	34.5	34.9	31.2	28.8	25.3	22.2
	Int.	32	40	40	40	40	35	35	27.5	26.8
<b>Max. Pressure Drop (MPa)</b>	Cont.	20	20	20	20	20	18	16	14	12.5
	Int.	24	24	24	24	24	21	18	16	13
	Peak	28	28	28	28	28	24	21	19	16
<b>Max. Flow (L/min.)</b>	Rated	80	100	100	100	100	100	100	100	100
	Cont.	100	125	125	125	125	125	125	125	125
	Int.	125	150	150	150	150	150	150	150	150
<b>Max. Inlet Pressure (MPa)</b>	Cont.	21	21	21	21	21	21	21	21	21
	Int.	25	25	25	25	25	25	25	25	25
	Peak	30	30	30	30	30	30	30	30	30
<b>Weight (kg)</b>		19.5	20	20.4	20.5	21	22	23	24	25

- \* Continuous pressure : Max. value of operating motor continuously.
- \* Intermittent pressure : Max. value of operating motor in 6 seconds per minute.
- \* Peak pressure : Max. value of operating motor in 0.6 second per minute.

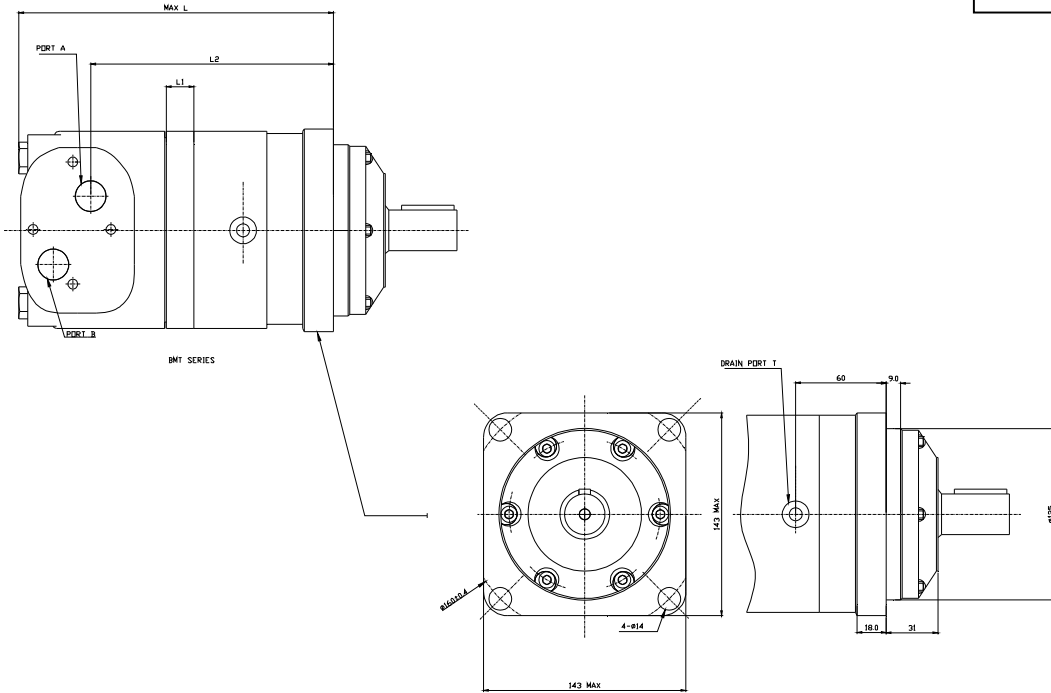
**MODEL NUMBER DESIGNATION:**

YMT	-160	-IS1	-K1	-A		-R	-00	-00	-10
Model Number	Displacement	Type of Flange Mounting	Type of Shaft	Port Sizes		Rotation Direction	Paint	Special Features	Design* Number
				Main Ports (A&B)	Drain Port	As viewed from shaft end			
YMM	160 200 250 315 400 500 630 800	<b>IS1:</b> 4 Bolt- Ø14 -Square flange Ø160, Spigot Ø125x9 □	<b>K1:</b> Shaft Ø40, parallel key 12x8x70	End Port G3/4	G1/4	<b>R:</b> Clockwise when port "A" is pressurized  <b>L:</b> Counter-clockwise when port "B" is pressurized	<b>00:</b> No paint	<b>00:</b> Standard	<b>10</b>

\* Design numbers subject to change but installation dimensions remain as shown.



**□ MOUNTING DETAILS:**

 DIMENSIONS IN  
MILLIMETRES


MODEL	L	L1	L2
BMT160	193	17	142.5
BMT200	197	21	146.5
BMT250	204	14	152.5
BMT315	210	20	158.5
BMT400	217	27	165.5
BMT500	225	35	173.5

Mounting Code	D(DEPTH)	M(DEPTH)	S(DEPTH)	G(DEPTH)	M3(DEPTH)	S1(DEPTH)
P(A,B)	G3/4(18)	M27X2(18)	1-1/16-12UN(18)	G3/4(18)	M27X 2(18)	1-1/16-12UN(18)
T	G1/4 (12)	M14 X 1.5(12)	9/16-18UNF(12)	G1/4 (12)	M14X1.5(12)	7/16-20UNF(12)
C	4-M10(10)	4-M10(10)				



**PERFORMAMANCE DATA:**
**YMT 160 (161.1 cm<sup>3</sup>/rev.)**
**YMT 200(201.4 cm<sup>3</sup>/rev.)**

	PRESSURE (MPa)						
	4	8	10	12	16	20	24
				Max.cont		Max.int	
	88 60	176 59	228 58	275 56	361 54	447 50	535 44
	89 121	181 120	234 117	277 114	372 109	459 103	557 95
	91 249	180 246	235 243	277 236	381 230	471 223	573 212
	82 371	178 367	235 362	277 356	381 349	470 340	572 330
	78 492	173 489	229 485	276 478	379 470	466 462	567 447
	70 614	160 611	218 606	269 598	370 590	455 582	558 570
	58 770	148 764	211 758	261 750	359 741	448 731	552 715

	PRESSURE (MPa)						
	4	8	10	12	16	20	24
				Max.cont		Max.int	
	124 47	233 46	289 45	340 42	454 39	560 37	669 33
	125 95	239 94	298 92	347 90	468 87	576 84	696 75
	120 195	241 193	296 191	352 187	475 183	589 178	716 167
	116 297	237 295	295 292	352 287	478 282	589 276	718 263
	108 395	231 393	289 389	350 384	474 377	586 370	716 359
	99 493	227 490	286 486	344 482	471 475	580 467	712 460
	84 615	208 611	276 607	333 602	459 595	566 588	697 572
	70 743	194 740	260 735	324 727	447 717	554 706	682 682

**YMT 250(251.8 cm<sup>3</sup>/rev.)**
**YMT 315(326.3 cm<sup>3</sup>/rev.)**

	PRESSURE (MPa)						
	4	8	10	12	16	20	24
				Max.cont		Max.int	
	138 38	286 38	355 37	419 36	559 34	689 32	824 31
	143 76	296 75	364 74	432 72	580 70	708 67	853 62
	139 156	301 154	372 152	440 149	593 146	723 142	884 134
	132 237	294 236	372 233	441 229	592 224	727 219	888 207
	128 317	283 316	364 314	433 308	587 303	721 299	887 284
	126 396	282 394	355 391	427 387	582 381	716 373	879 359
	116 495	260 492	340 488	414 483	568 476	703 469	864 454
	88 592	242 589	320 585	397 580	552 572	686 565	847 545

	PRESSURE (MPa)						
	4	8	10	12	16	20	24
				Max.cont		Max.int	
	184 30	363 29	453 28	545 27	734 26	891 25	1062 23
	189 60	380 59	472 58	562 56	757 54	917 52	1109 50
	191 121	381 120	484 118	570 115	774 112	954 109	1149 104
	189 183	376 181	493 179	573 175	772 172	962 168	1154 158
	179 244	369 242	479 239	565 236	768 231	954 227	1153 217
	169 305	357 304	467 301	562 298	758 294	942 289	1143 276
	147 380	336 378	447 375	544 371	745 367	920 362	1127 349
	119 458	318 456	432 453	526 449	713 444	894 431	1097 425

**YMT 400(410.9 cm<sup>3</sup>/rev.)**
**YMT 500 (523.6 cm<sup>3</sup>/rev.)**

	PRESSURE (MPa)							
				Max.cont		Max.int		
	3	6	9	12	15	18	21	
Flow (L/min)	10	176 24	367 23	560 22	715 21	885 20	1050 19	1209 18
	20	179 49	370 48	565 47	726 44	899 42	1071 40	1236 38
	40	176 96	370 95	567 93	733 90	919 87	1091 83	1263 79
	60	174 145	361 143	563 139	729 135	920 131	1095 127	1269 121
	80	166 193	353 191	553 188	719 184	912 180	1084 176	1263 170
	100	150 242	339 240	538 238	708 234	896 228	1067 224	1252 218
Max.cont	125	135 302	309 300	524 298	688 294	873 289	1045 285	1221 278
Max.int	150	126 364	292 362	508 358	666 354	852 350	1020 346	1197 339

	PRESSURE (MPa)							
				Max.cont		Max.int		
	3	6	9	12	14	16	18	
Flow (L/min)	10	222 18	451 18	692 18	892 17	1050 16	1193 15	1340 13
	20	231 37	464 36	714 35	918 34	1070 33	1220 32	1377 30
	40	176 96	370 95	567 93	733 90	919 87	1091 83	1263 79
	60	174 145	361 143	563 139	729 135	920 131	1095 127	1269 121
	80	166 193	353 191	553 188	719 184	912 180	1084 176	1263 170
	100	150 242	339 240	538 238	708 234	896 228	1067 224	1252 218
Max.cont	125	135 302	309 300	524 298	688 294	873 289	1045 285	1221 278
Max.int	150	126 364	292 362	508 358	666 354	852 350	1020 346	1197 339

TORQUE (N.M) 1020  
SPEED (rpm) 346

